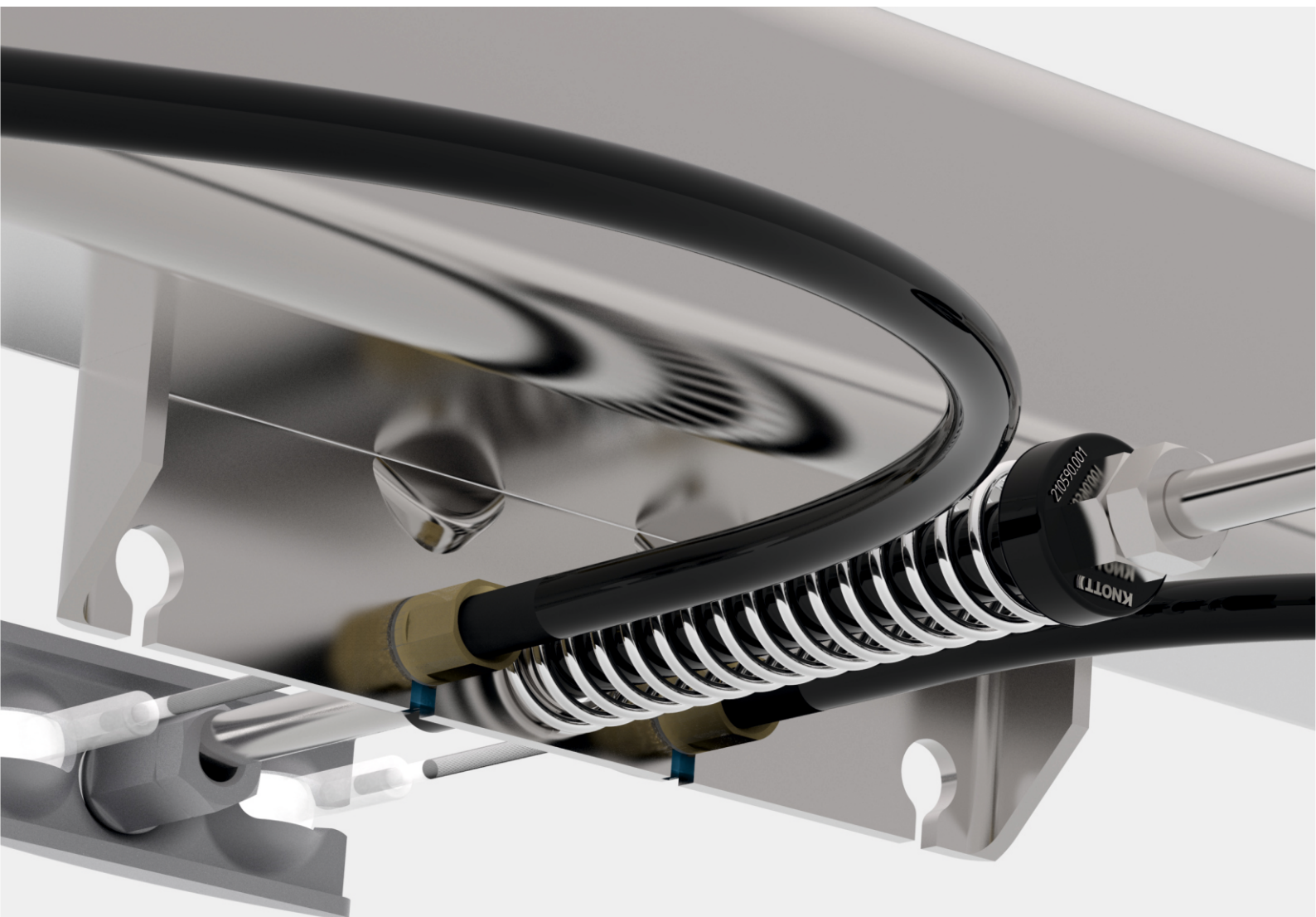


Newsletter

09.2021

Rod guidance



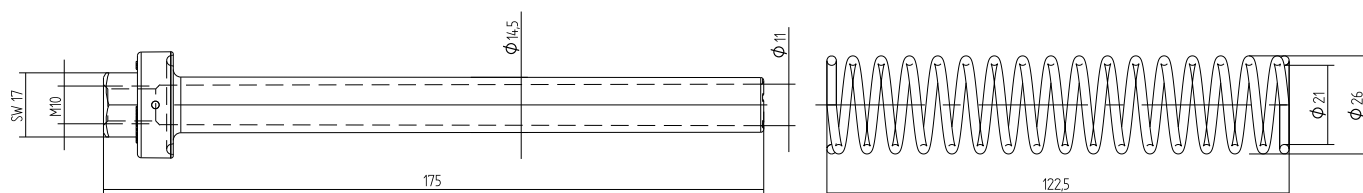
knott.pl



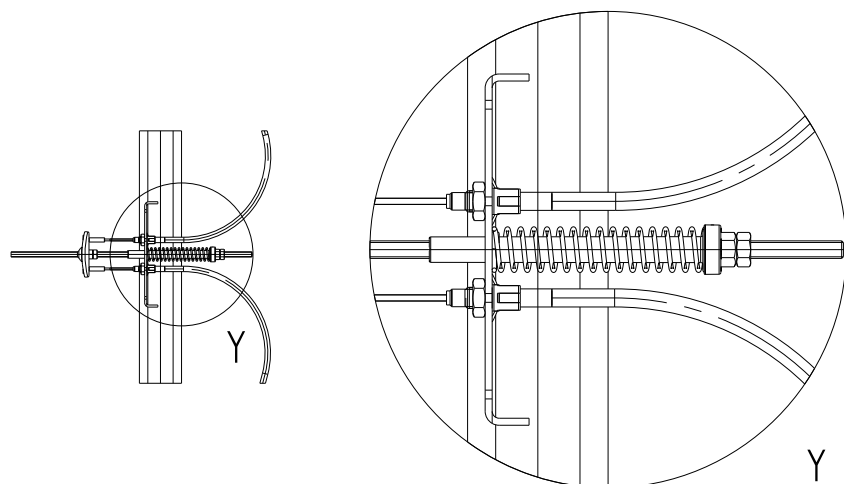
Dear Sirs,

below we present the brake rod guidance, the task of which is to protect the brake rod from blocking in the cable holder welded in the axle body.

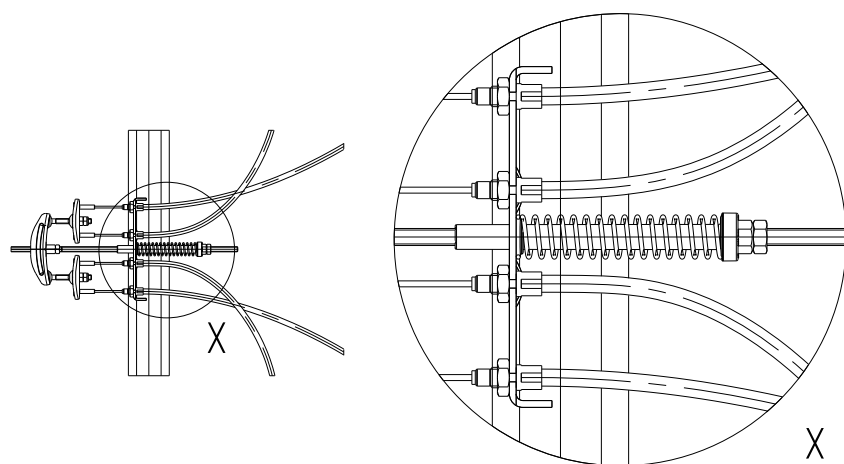
This protection is prepared in such a way that it can be used without any problems in the case of already manufactured chassis, which allows for assembly at every stage of the product's life.



Art. Nr 210846.001



The picture on the right presents the correct way of mounting the rod guidance for the single axle system. Additionally, the guide is equipped with a spring ensuring the appropriate tension of the braking system in trailers with overrun devices with adjustable coupling height.



The picture on the right presents the correct method of mounting the rod guidance for the tandem system. Particular attention should be paid to the method of connecting the brake cables, which is important for the proper operation of the system during a failure.

Art. Nr 210846.001



The brake rod guidance is the safety of the proper operation of the brake system in all conditions.

It is available in two versions: with and without a spring, so you can choose a solution that suits your needs.



When installing the bar guidance, pay attention that, just like in the case of the standard towing bar assembly, the nut built into the guide should be "checked" to prevent it from moving during the trailer operation and during the braking system operation.

Detailed information about the products is provided by the Trade Department of KNOTT Sp. z o.o.

KNOTT Sp. z o.o.

63-011 Plawce
Zdziechowice 100
tel. 61 287 60 00
fax 61 287 60 01
info@knott.pl
www.knott.pl

