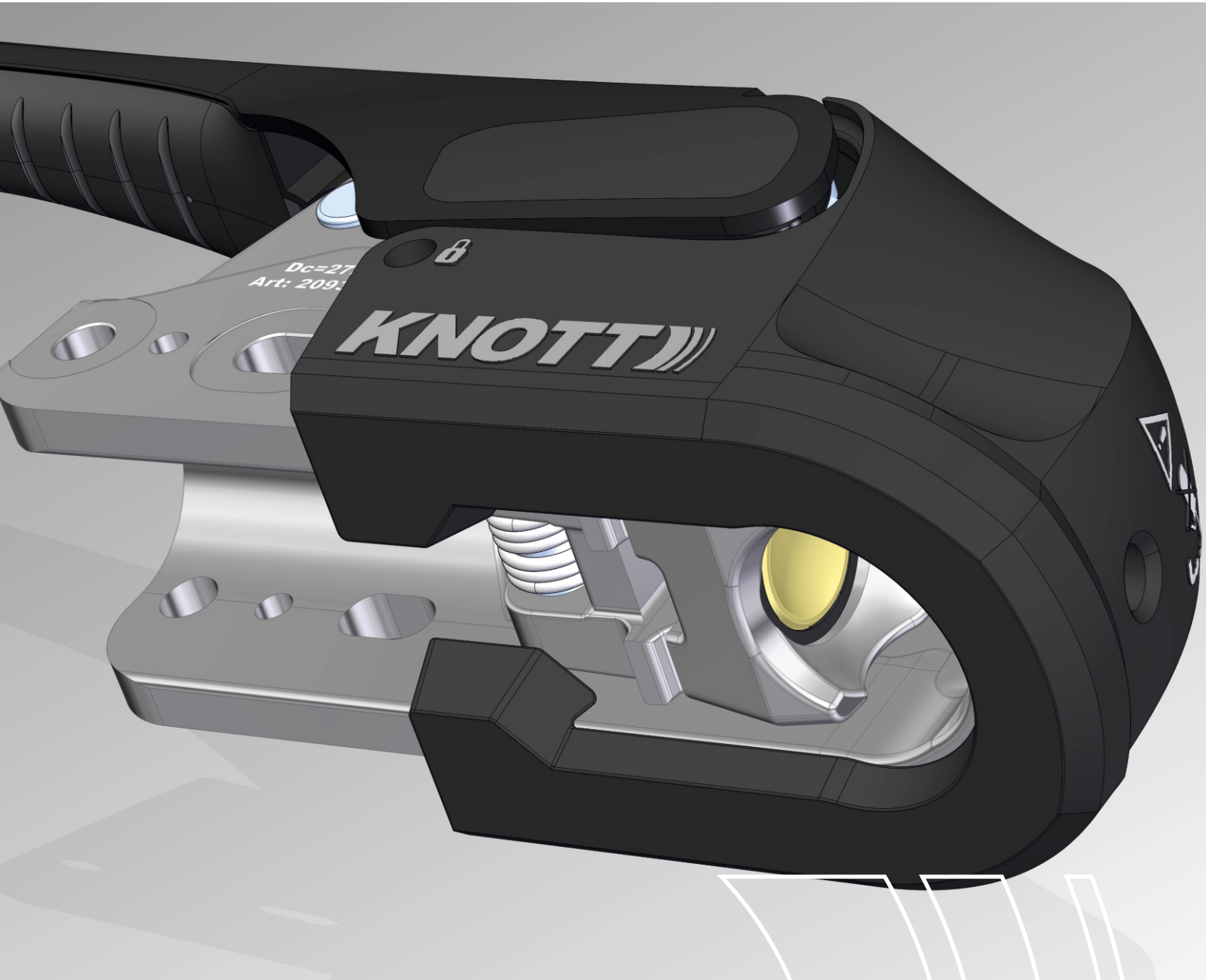


# Newsletter

08.2020

Friction elements to KS30 couplings



knott.pl



Dear Sirs

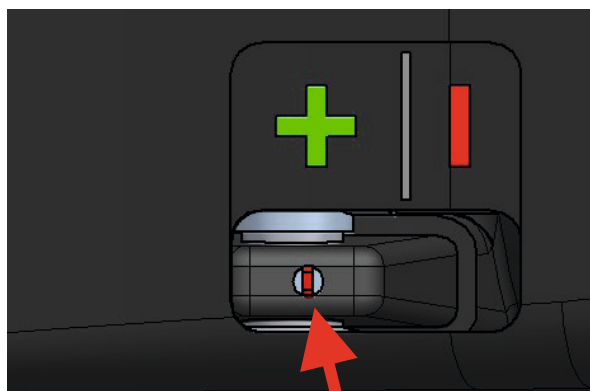
Anti-twister couplings, due to their construction, require inspection and replacement of friction elements cooperating with the ball of the towing vehicle. So if these elements have been worn - visual assessment, or there are factors indicating wear should be replaced as soon as possible.

**Note:** Hooks must not work with towballs that have been lubricated. Fastening the ball hitch with grease causes lubrication of the friction linings, which causes them to lose their properties and also require replacement as soon as possible.

After coupling and activating the stabilizing device, you can check the condition of the friction elements. For this purpose a wear indicator is provided at the top of the hitch handle

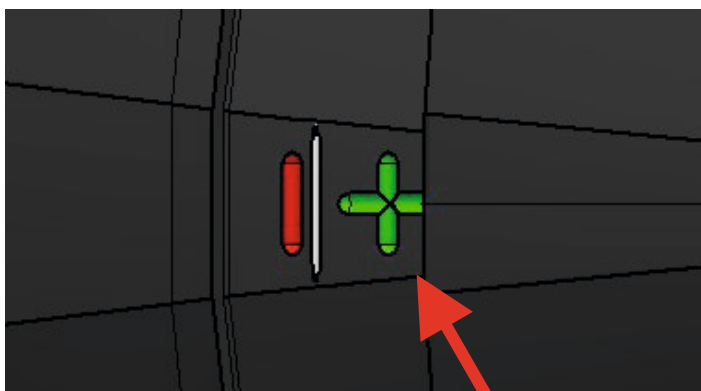
The condition of the friction elements must be checked in accordance with the following instructions:

### Variant "A"



If the wear indicator in variant "A" is in the "+" range the jaws are able good

### Variant "B"



If the wear indicator in variant "B" is in the "+" range then the jaws are able good

If the wear indicator is on the dividing line, the friction elements should be replaced. Also check the condition of the towing vehicle's hook.

If the wear indicator in variant "A" is in the range "-" or in variant "B" only the symbol "-" is visible, the friction linings must be replaced immediately. Also check the condition of the towing vehicle's hook. Do not attempt to drive with a trailer until the friction linings are replaced.

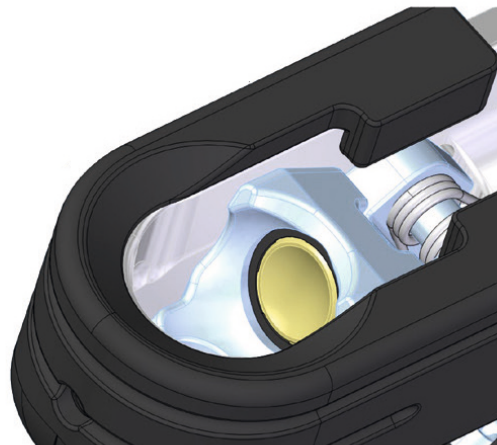
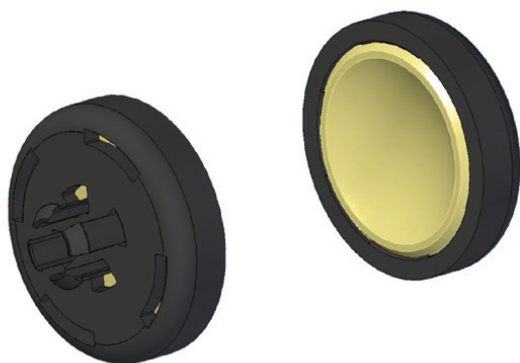
A set of spare parts for the replacement of friction elements is available under article number 209698.001, which contains detailed information on the replacement of friction elements of the KS hitch.



**Original spare parts:**

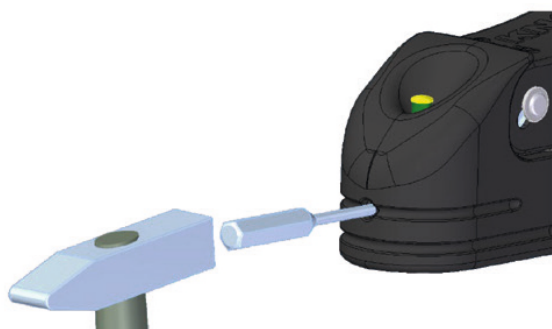
209698.001 - Friction elements for hooks with stabilization

The offered set is designed for the following taps: KS25, KS30, KS35, KSE30 and KSE35

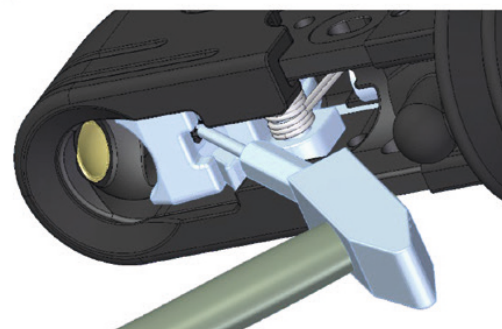


1. Remove worn parts with a hammer and drift

1a



1b

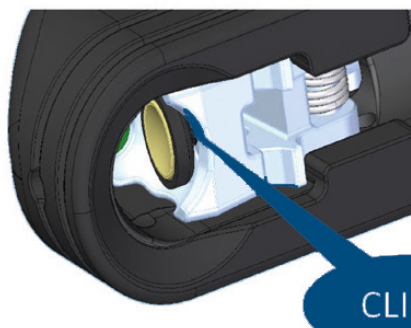


2. Push the new components in by hand until you hear a click sound

2a



2b



Detailed informations are provided by Sales Department of KNOTT Sp. z o.o.

**KNOTT**

KNOTT Sp. z o.o.

63-011 Pławce  
Zdziechowice 100  
tel. 61 287 60 00  
fax 61 287 60 01  
info@knott.pl  
[www.knott.pl](http://www.knott.pl)

02-230 Warszawa  
ul. Jutrzenki 50  
tel./fax 22 846 02 90  
warszawa@knott.pl

41-103 Siemianowice Śląskie  
ul. Łącząca 1  
tel. 32 765 32 30  
tel./fax 032 765 32 31  
siemianowice@knott.pl

80-557 Gdańsk  
ul. Załogowa 6  
tel. 58 341 33 08  
gdansk@knott.pl

