

# Newsletter

03.2023

Heavy VGB axles



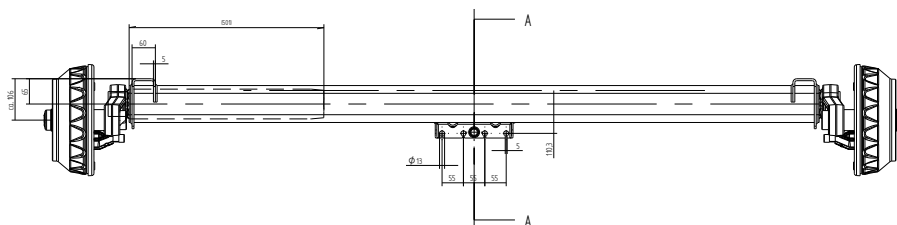
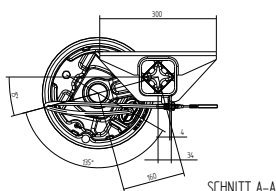
knott.pl

Dear Sirs,

To meet your expectations, we are expanding the range of our products with rubber suspension axles up to a tonnage of 3500 kg. The offered axles are an alternative to GB axles, which have been in our range for a long time. Key characteristics:

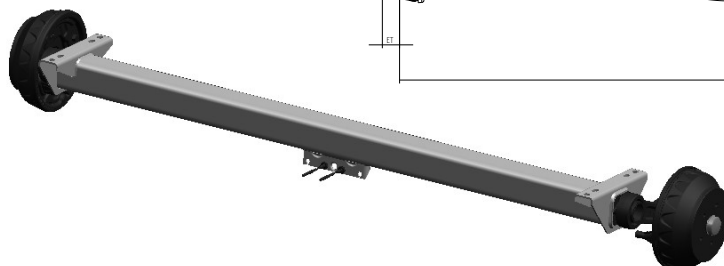
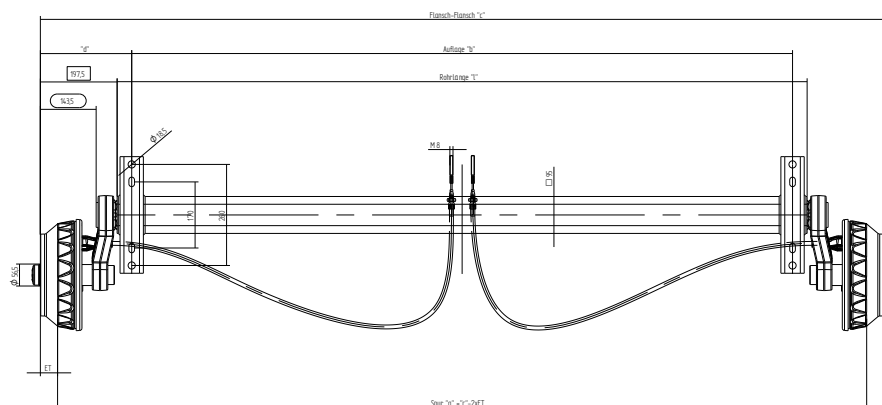
- axle body made of HP95x95 or 110x110 profile in S355 grade,
- for optimal work characteristics, we used a rocker arm with a rosette cross-section, which translates into driving comfort with our axles,
- the length of the swing arm was also checked for suspension characteristics and it was extended to 190mm,
- the offered wheel connections are identical to the GB35SV axle, which ensures full compatibility and the possibility of replacing the axles with each other,
- brake 300x60 Spr.Backmat (30-2261) allows to offer the mentioned axles in the tonnage range of 2500kg - 3500kg,
- intended for rims with ET=0,

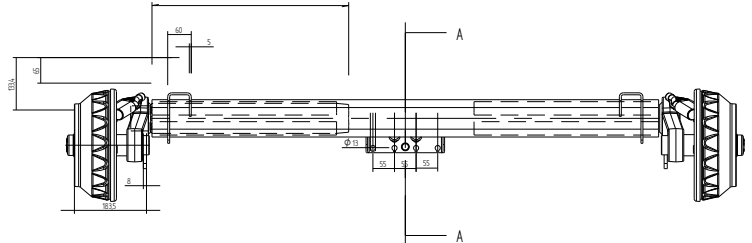
Below we present VGB18 axles with a reinforced body, thanks to which we gain much better axle shock absorption as well as strength and durability



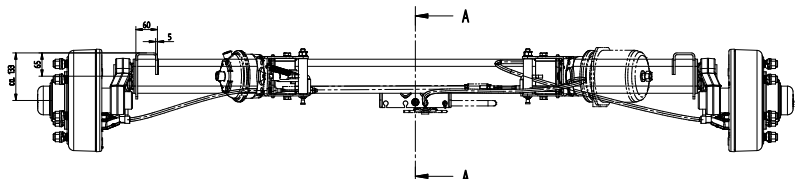
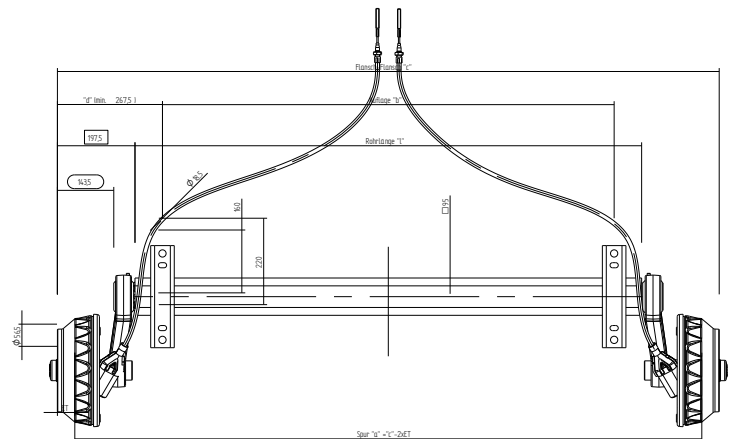
Art Nr 410023.xxx

Brake 250x40

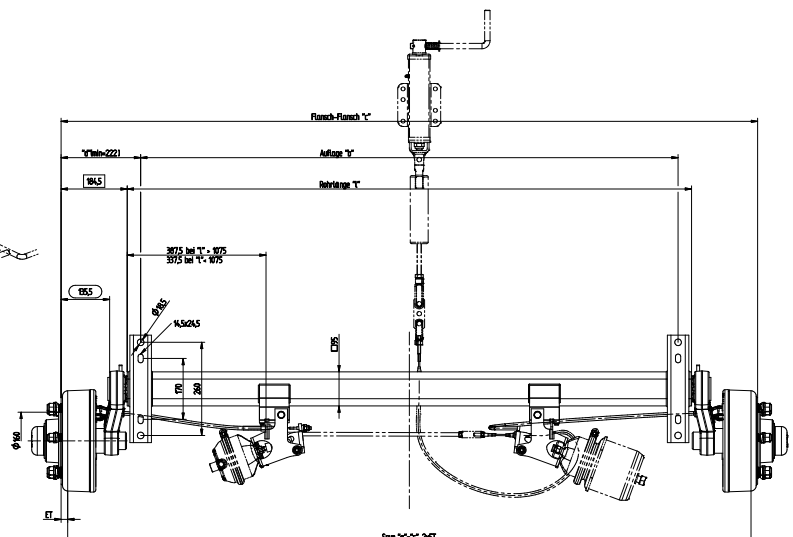
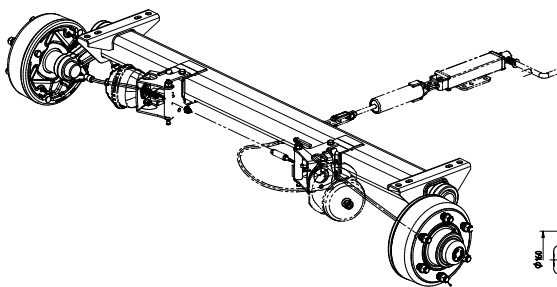




Hamulec 250x40



## Brake 250x50



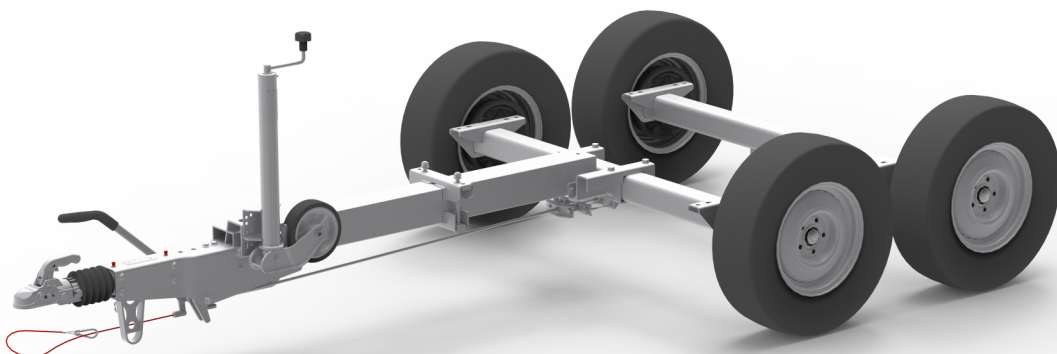
Axles are used in the case of single-axle trailers for transporting aggregates and other machines, where high strength of one axle is required while maintaining appropriate deflection characteristics.

An example of the running gear adapted to the installation of the unit frame is presented below:



Axles are also used in trailers, where a stronger suspension is important due to the possibility of overloading one of them during transport, or in the case of trailers that are constantly loaded to the maximum permissible total weight.

In this case, the axles are better cushioned and their work characteristics are much gentler than in the case of standard axles up to 1800 kg.

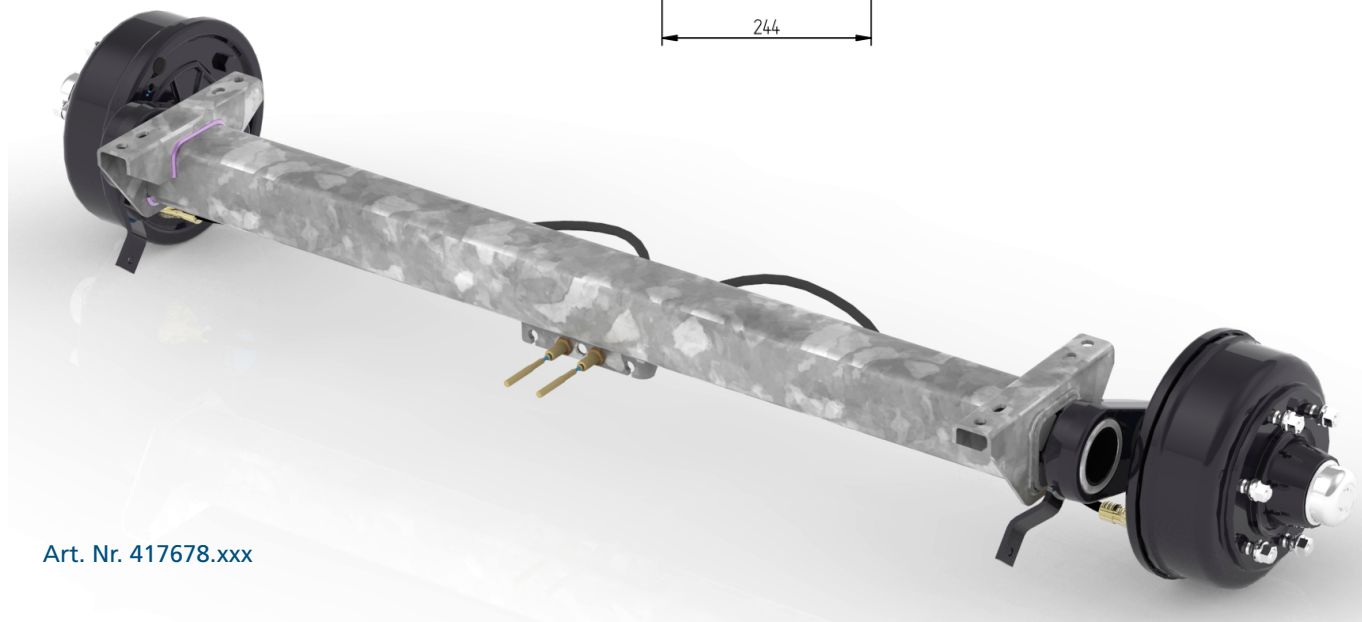
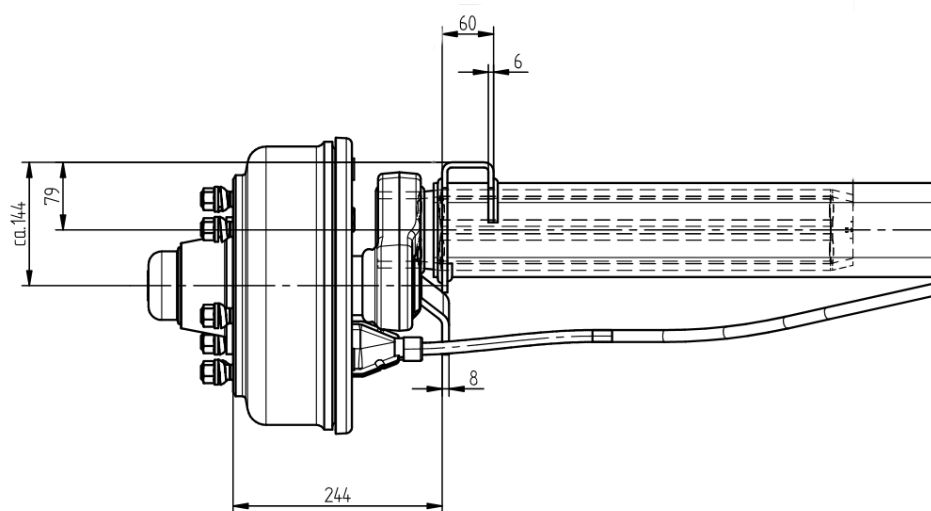




Offered axles, thanks to the use of larger cross-sections of the body, allow you to transfer much higher loads than standard axles. This solution, combined with various types of our company's brakes, allows us to offer axles with a load capacity of up to 2500 kg.

An additional advantage is that they are a cheaper alternative to our company's GB axles.

The deflection characteristics of the offered axles are typical for axles with suspension on rubbers.



Art. Nr. 417678.xxx

Detailed information about the products is provided by the KNOTT Sp. z o. o.

**KNOTT**

KNOTT Sp. z o.o.

63-011 Pławce  
Zdziechowice 100  
tel. 61 287 60 00  
fax 61 287 60 01  
info@knott.pl  
[www.knott.pl](http://www.knott.pl)

