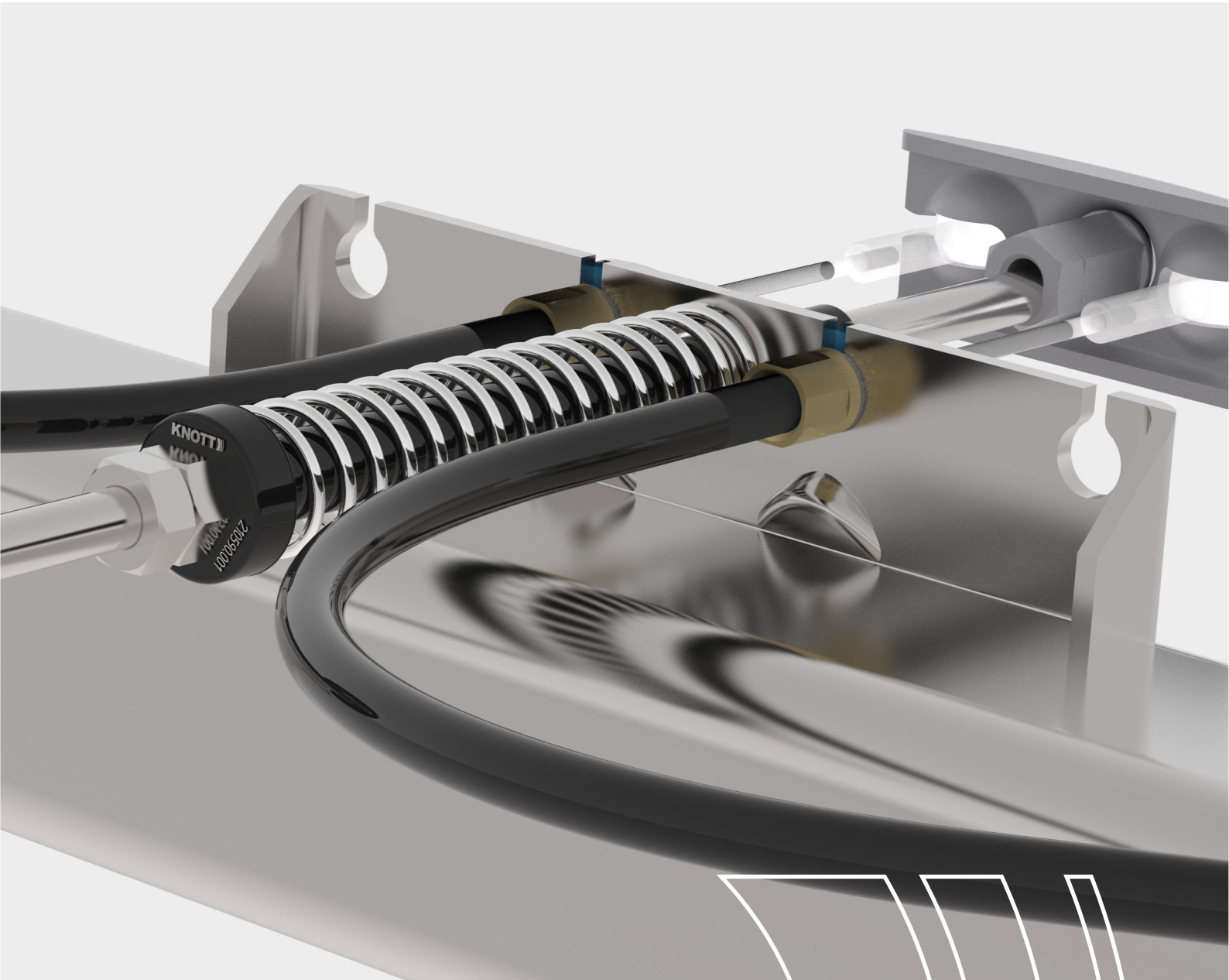


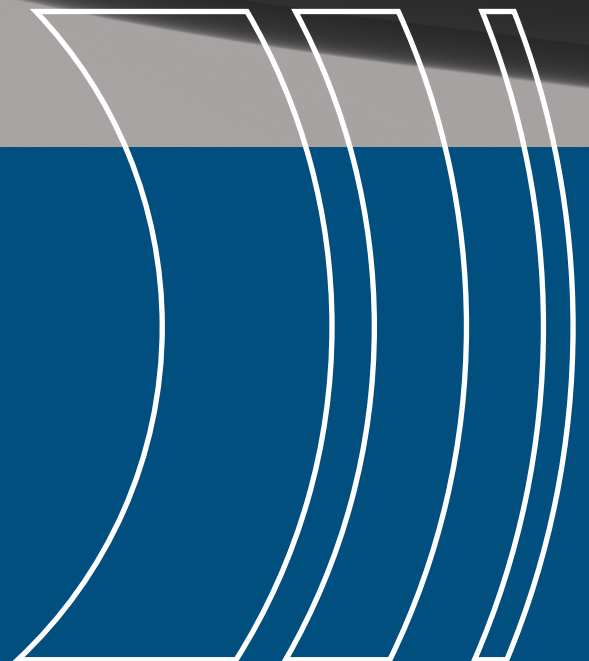
# Newsletter

02.2023

Securing the brake rod at the cable holder



knott.pl

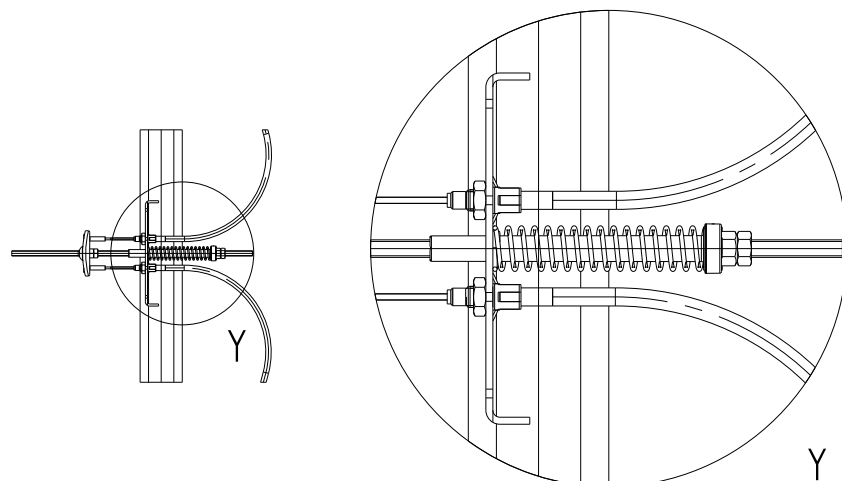


Dear Sirs,

below, we present the brake rod guide, whose task is to protect the brake rod against abrasion and blocking in the brake cable holder, which is welded into the axle body of our company.

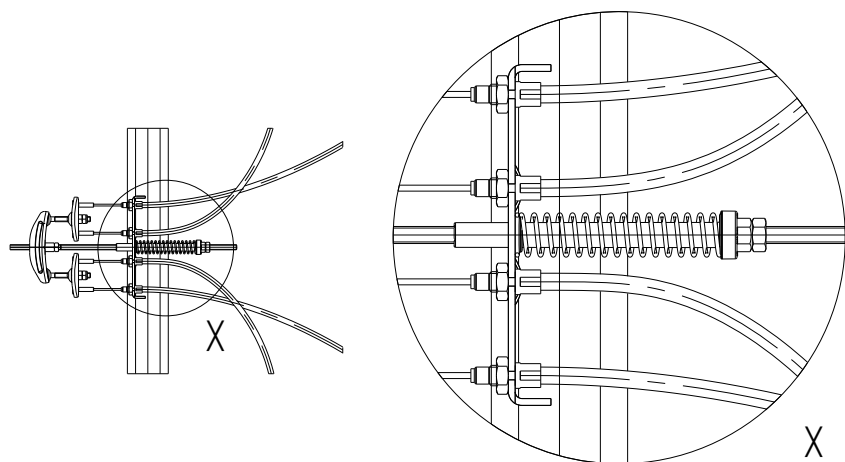
This protection is prepared in such a way that it can be used without any problems in the case of already manufactured chassis, which allows for assembly at every stage of the product's life.

The assembly consists only in the proper screwing of the protection on the brake rod that goes through the cable holder. Below we present the correct method of assembly in two cases - for single-axle trailers, where there is a single drag bar, as well as for tandem systems.



The figure on the right shows the correct way to install the rod guide for a uniaxial system.

In addition, the guide is equipped with a spring that ensures the proper tension of the braking system in trailers with overrun devices with adjustable coupling height, where the force from the bolt carrier and the cam is transmitted through a KHV type steel cable.

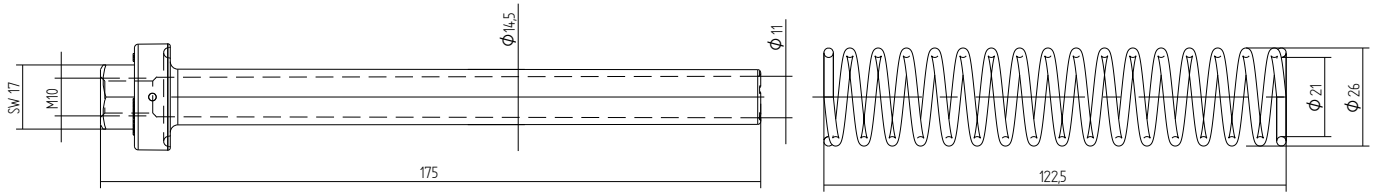


The figure on the right shows the correct way to install the rod guide for a two-axis system.

Particular attention should be paid to the way the brake lines are connected, which is important for the proper operation of the system during a breakdown.

We recommend installing one brake cable for each axle on a separate single drag bar.

Art. No 210846.001



Art. No 210846.001



Art. No 210846.001

Guiding the brake rod is the safety of the correct operation of the braking system in all conditions.

It is available in two versions: with a spring and without a spring, thanks to which you can choose a solution to your needs.



Art. No 210590.001

When assembling the guide of the rods, it should be noted that, as in the case of standard assembly of the drag bar, the nut built into the guide should be "countered" to prevent it from moving during the use of the trailer and during the operation of the braking system.

Detailed information about the products is provided by the KNOTT Sp. z o.o.

KNOTT Sp. z o.o.

63-011 Pławce  
Zdziechowice 100  
tel. 61 287 60 00  
fax 61 287 60 01  
info@knott.pl  
[www.knott.pl](http://www.knott.pl)

