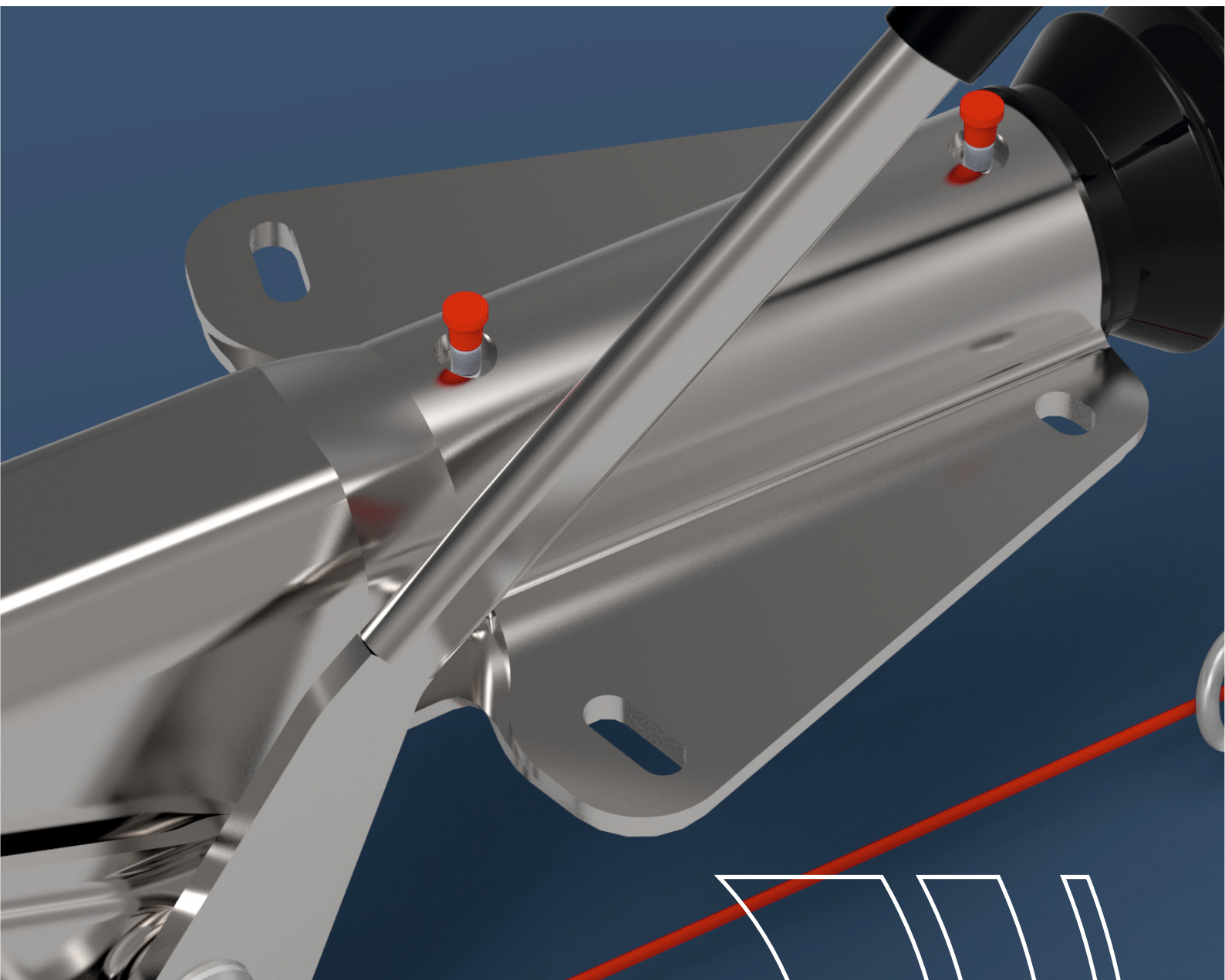


Newsletter

02.2021

Overrun devices KF30-E and KFGL35-A



knott.pl



Dear Sirs,

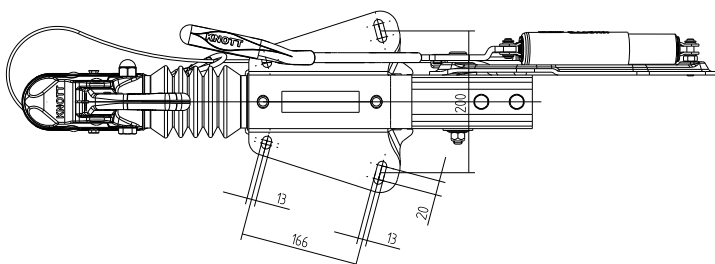
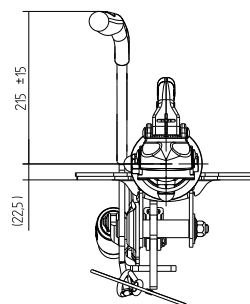
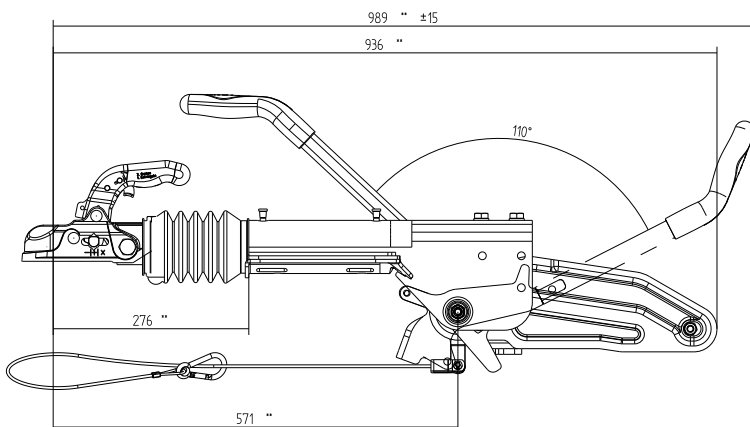
following publication is prepared to provide an overview of alternative overrun devices that can replace devices with a cast body type KFG30 and KFG35

The possibility of using the overrun devices shown below requires both types of devices in the chassis approval. If you do not have this type of overrun in your approval and you are interested in extending it, please contact the sales department representatives.

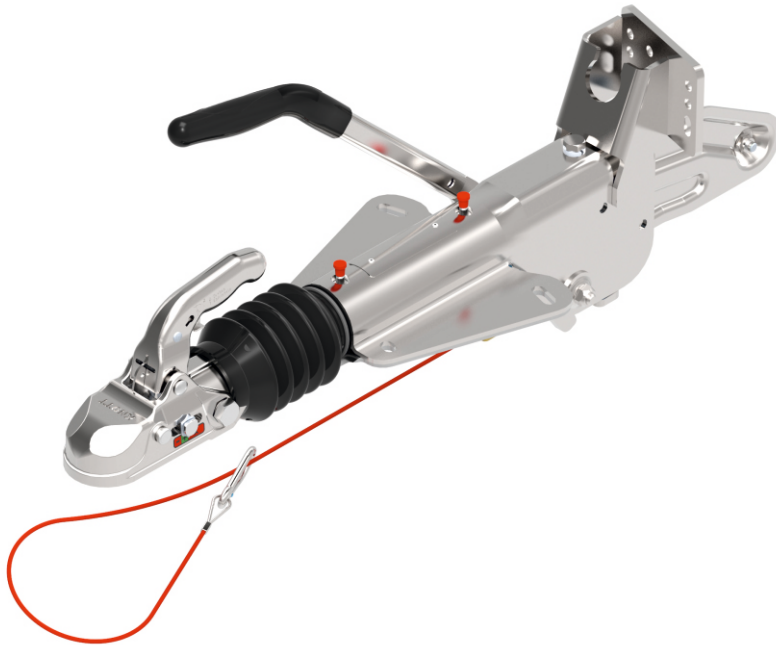


Overrun device type KF30-E
with sheet metal housing.

Can be mounted both under the
drawbar and on the ZHL drawbar.

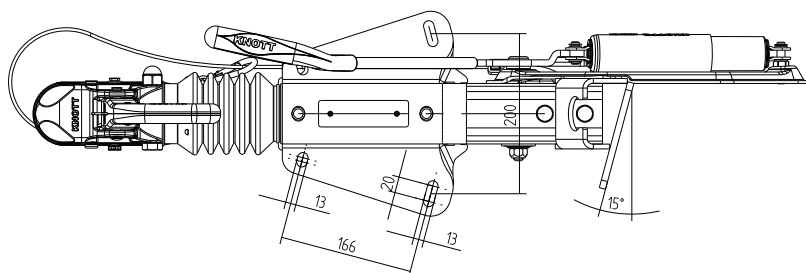
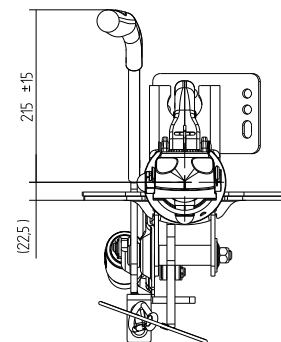
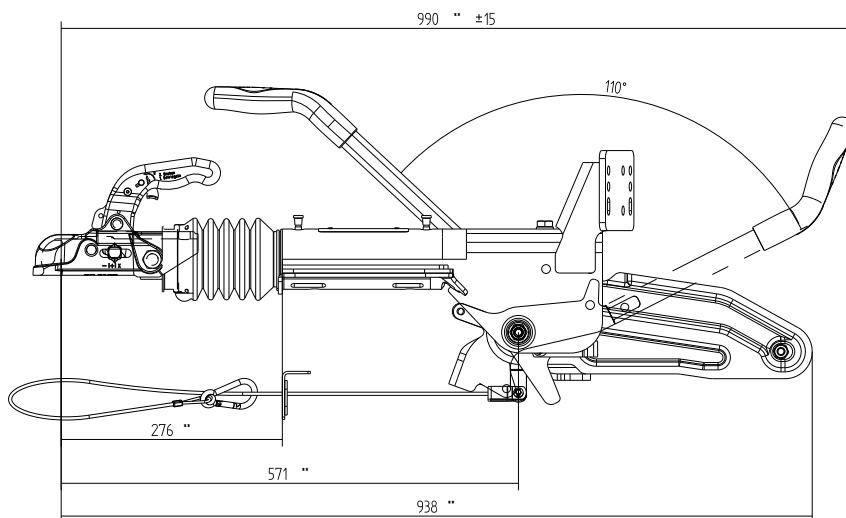


Working range: 1600-3000 kg
Permissible vertical load S: 150 kg
ECE: 55R-012066
Weight: 21.9 kg
Art. Nr: 203855.xxx

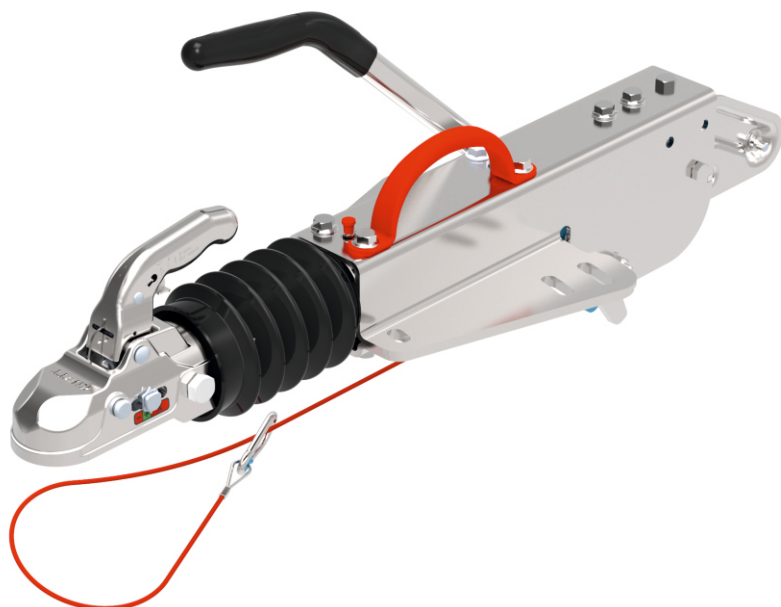


Overrun device type KF30-E
with sheet metal housing and
integrated support wheel console.

Can be mounted both under the
drawbar and on the ZHL drawbar.

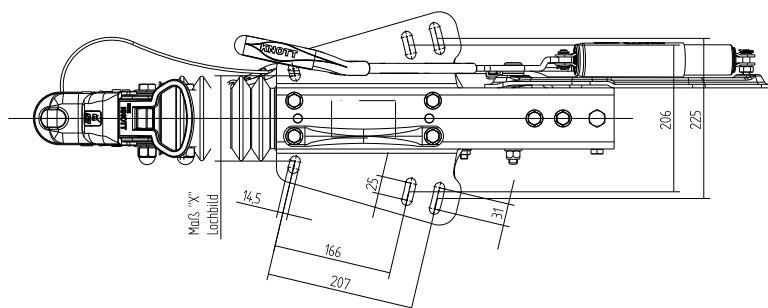
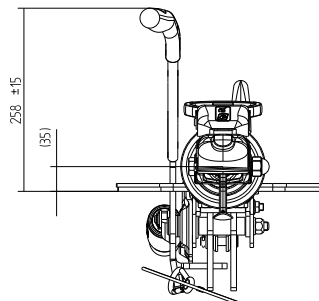
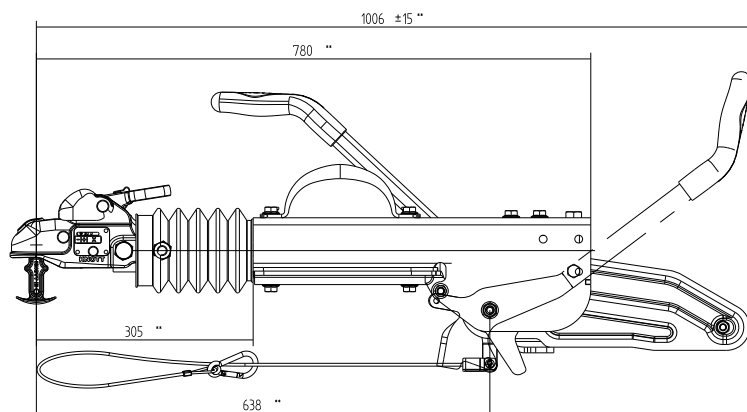


Working range: 1600-3000 kg
Permissible vertical load S: 150 kg
ECE: 55R-012066
Weight: 24.0 kg
Art. Nr: 204303.xxx



Overrun device type KFGL35-A with a sheet metal housing and the possibility of screwing the support wheel console

Can be mounted both under the drawbar and on the ZHL drawbar.



Working range: 2700-3500 kg
 Permissible vertical load S: 150 kg
 ECE: 55R-011730
 Weight: 29.8 kg
 Art. Nr: 204530.xxx

Detailed information about the products is provided by the Trade Department of KNOTT Sp. z o.o.

KNOTT Sp. z o.o.

63-011 Plawce
 Zdziechowice 100
 tel. 61 287 60 00
 fax 61 287 60 01
 info@knott.pl
www.knott.pl

