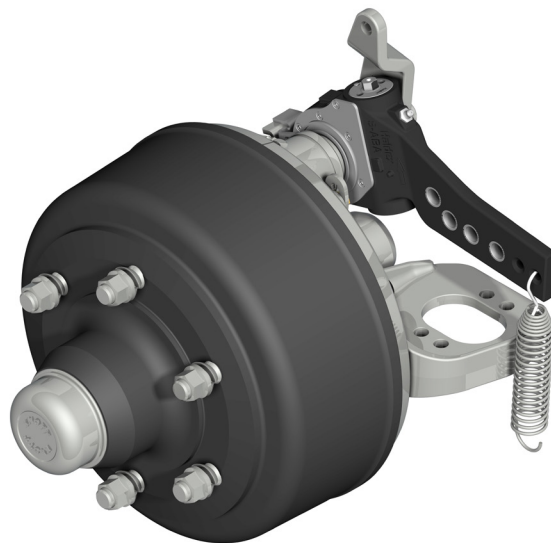
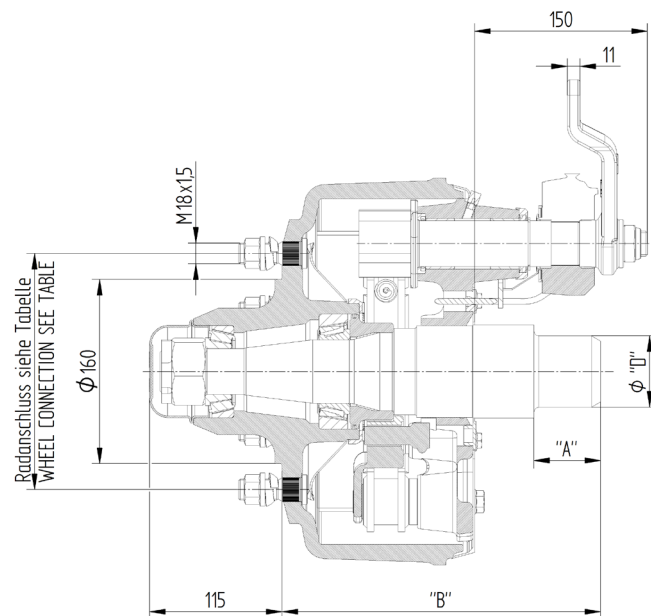


300x120 S-Nocken



Typ	Radlast kg	Achslast kg	ET	Rad- anschluss	D	A	B	Gewicht kg	Bestell- nummer
Bremsstummel 300x120 li. S-Nocken	2500	5000	0	205x6	62	57	277	58,20	403978P997
Bremsstummel 300x120 re. S-Nocken	2500	5000	0	205x6	62	57	277	58,20	403978P998